

Series 8 pneumatic operated cartridge valves

New 

2/2-way - 3/2-way, Normally Closed (NC)



Series 8 pneumatic operated valves are particularly suitable for applications requiring high flow combined with compact design.

The valve is pneumatic operated by electro-pilots which are dimensioned according to the size.

The cartridge design, which is ideal for manifold assembly, allows to reduce both dimensions and the number of pneumatic connections.

The valve design allows it to work 2/2-way or 3/2-way.
The function depends on the type of seat on which the valve is mounted.

- » Compact design
- » High flow
- » Manifold assembly
- » Long life

GENERAL DATA

TECHNICAL FEATURES

Function	2/2 NC - 3/2 NC
Operation	pneumatic operated poppet type
Pneumatic connections	manifold cartridge
Nominal diameter	5 ... 9 mm
Nominal flow	see Kv
Kv (l/min)	10 ... 38
Operating pressure	-0.9 ÷ 5 ... 7 bar
Operating temperature	0 ÷ +50°C
Media	filtered air, class 5.4.4 according to ISO 8573-1 (max oil viscosity 32 cSt), inert gas
Response time (ISO 12238)	ON <15 msec – OFF <15 msec
Installation	in any position

MATERIALS IN CONTACT WITH THE MEDIUM

Body	brass
Internal parts	aluminium
Seals	FKM

CODING EXAMPLE

8	10	C5	1	00	-	F1	3	2
----------	-----------	-----------	----------	-----------	----------	-----------	----------	----------

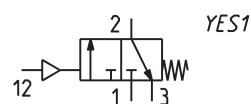
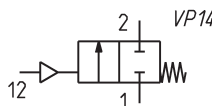
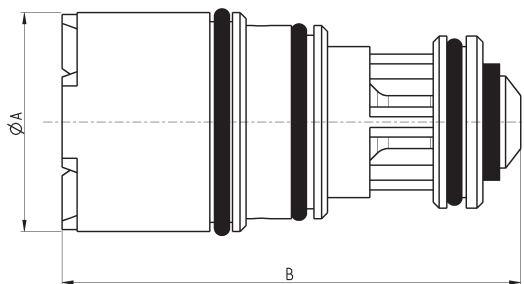
8	SERIES
10	SIZE: 10 = Size 1 20 = Size 2 30 = Size 3
C5	BODY DESIGN: C5 = cartridge
1	NUMBER OF WAYS - FUNCTIONS: 1 = 2/2-way NC or 3/2-way NC NOTE: The function depends on the seat used (for further details see the following pages)
00	PNEUMATIC CONNECTIONS: 00 = cartridge
F1	NOMINAL DIAMETER: F1 = Ø 5.0 mm (size 1 only) G7 = Ø 6.6 mm (size 2 only) K1 = Ø 9.0 mm (size 3 only)
3	SEAL MATERIAL: 3 = FKM
2	BODY MATERIAL: 2 = brass

2

CONTROL

Pneumatic cartridge valve 2/2-way and 3/2-way NC

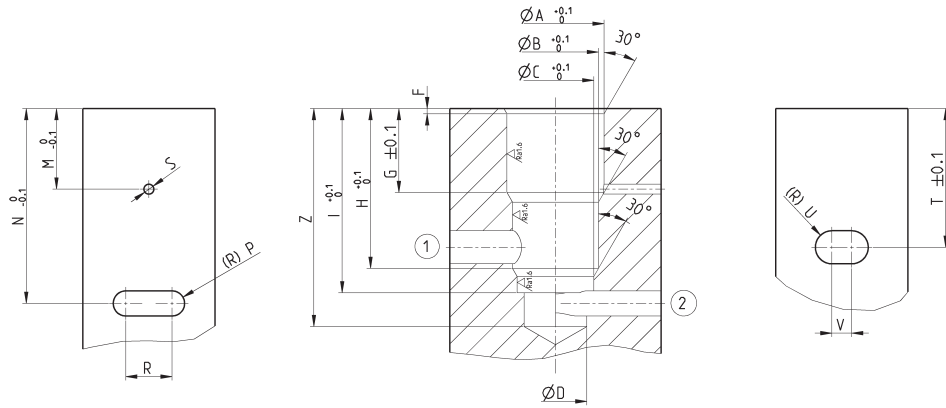
For 2/2-way (pneumatic symbol VP14) or 3/2-way (pneumatic symbol YES1) function, see the seat dimensioning in the next pages.



Mod.	ØA	B	Nominal diameter Ø (mm)	Kv (l/min)	Min/max pressure (bar)	Min/max pilot pressure (bar)
810C5100-F132	10	26.7	5.0	10	-0.9 + 7	2 + 7
820C5100-G732	14.5	30.3	6.6	19	-0.9 + 7	2 + 7
830C5100-K132	22	34.8	9.0	38	-0.9 + 7	2 + 7

Seat for Series 8 pneumatic valve with 2/2-way NC function

NOTE IN THE DRAWING:
1 = INLET
2 = OUTLET

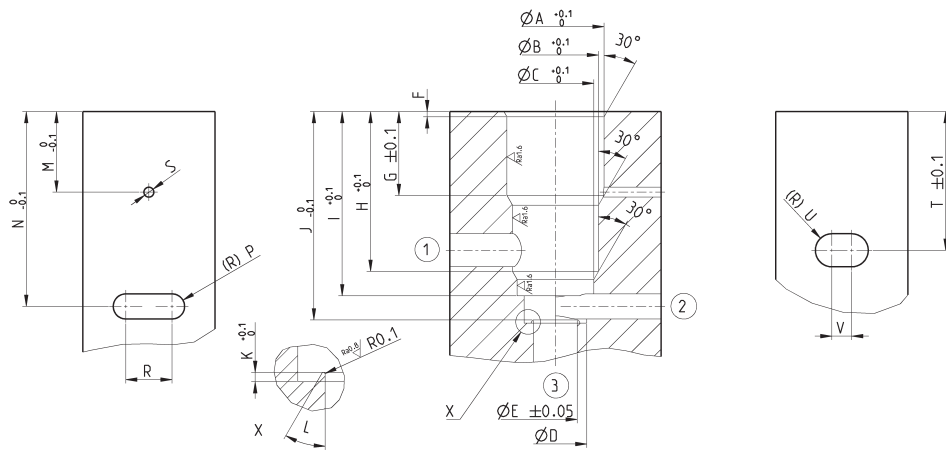


SERIES 8

Size	A	B	C	D	F	G	H	I	M	N	P	R	S	T	U	V	Z
1	10.4	9.7	9	8.2	0.8	14.5	20.7	25	13.2	26.3	1.5	5	1.5	19.1	3	5	30
2	14.65	12.95	11.55	9.5	0.8	12.8	24.2	27.9	12.2	28	1.9	7	1.5	21	2.5	3	33
3	22.1	20.6	19.6	16.2	0.5	15	28.7	33.4	13.5	37.4	4	4.4	2.5	24.8	3.75	5	41

Seat for Series 8 pneumatic valve with 3/2-way NC function

NOTE IN THE DRAWING:
1 = INLET
2 = OUTLET
3 = EXHAUST



SERIES 8

Size	A	B	C	D	E	F	G	H	I	J	K	L	M	N	P	R	S	T	U	V
1	10.4	9.7	9	8.2	5	0.8	14.5	20.7	25	28	0.3	45	13.2	26.3	1.5	5	1.5	19.1	3	5
2	14.65	12.95	11.55	9.5	6.6	0.8	12.8	24.2	27.9	31.55	0.5	30	12.2	28	1.9	7	1.5	21	2.5	3
3	22.1	20.6	19.6	16.2	9	0.5	15	28.7	33.4	38.05	1	60	13.5	37.4	4	4.4	2.5	24.8	3.75	5